

TAILORED SOLUTIONS

量身定制的解决方案 ◀

BM型环链电动葫芦通过相关权威认证。

葫芦电机、环链电动葫芦以及行走电机装置的防护等级为IP55，手电门防护等级为IP65外壳，可以防潮防尘。

BM Electric chain hoist has been certified by the relevant national authority , Protection class of hoist motor, electric chain hoist and traveling motor device are all Ip55, push button control is with excellent moistureproof & dustproof, Ip65 .



1

齿轮箱——免维护，工作级别为M6，BM型环链电动葫芦满载运行的时间长达1900小时，此为八马的标准额定使用时间，这意味着在实际应用中八马要多出约20%的工作寿命。齿轮箱的斜齿轮传动降低工作噪音，运行更稳定。

Gearbox——Maintenance-free, working-level for M6.

BM electric chain hoist with a rated service life of 1990 full load hours. In practical terms, this means the service life is extended by approx. 20%. The helical gearing inside the gearbox also reduces operating noise and provides smooth operation.

2

制动器——免维护，由于磨损小，无需调节；制动快速平稳。制动器外壳采用双重密封，可在恶劣气候或工作环境下工作。

Maintenance——free, working-level for M6.

BM electric chain hoist with a rated service life of 1990 full load hours. In practical terms, this means the service life is extended by approx. 20%. The helical gearing inside the gearbox also reduces operating noise and provides smooth operation.

3

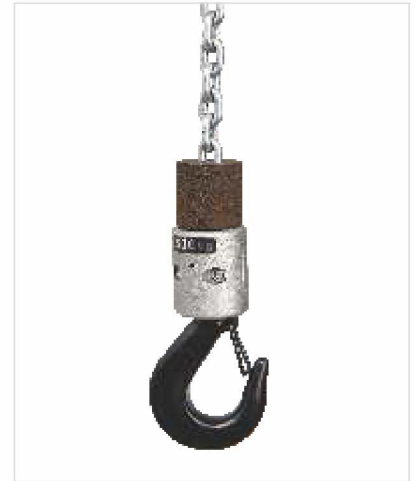
摩擦离合器——免维护。摩擦离合器集成在制动器的后端，能有效起到过载保护作用。内部具有速度检测器，非正常情况下可有效保障葫芦链条绝不会下滑。

Slip clutch——Maintenance-free. Integrated behind the brake in the power drive, it provides reliable protection against overload. Integrated slip clutch monitoring prevents permanent damage to the slip clutch.

4

手电门的高度调节——在吊钩行程2—5m和5—8m的范围内，控制电缆长度和手电门悬挂高度可无限变化。多余的控制电缆可被容纳在统一维修区。

Height adjustable control pendant cable——The length of the control cable. Therefore, the suspension height of the control pendant can be infinitely varied for a hook path range of 2—5m and 5—8m. The excess control cable is accommodated behind the service cover.



5

控制方式——24V低压控制方式，上下限位开关。

Control——24V contactor control.operating limit switches (upper/lower).

6

链条——高强度、抗老化的八马起重专用链条，表面经过硬化处理。镀锌和额外的表面处理保护其不受恶劣环境的侵蚀。

Steel chain——A special Brima chain of high-strength.Hardened age-resistant material.Galvanized and other surface-treatments are available to protect against specific hostile environments.

7

悬挂装置——BM型环链电动葫芦采用紧凑的C型结构尺寸，可充分利用高度空间。BM型环链电动葫芦配有多款悬挂装置，使其连接更为完美。

Suspension bracket——BM hoists are supplied with short and long suspension brackets as standard and can always be attached to the super-structure with the optimal connectin.

8

外壳——坚固，重量轻的压铸铝外壳，紧凑、现代化的工业设计。汽车级油漆，提供保护更长久。

Housing——Robust and lightweight die-cast aluminium housing of compact and modern industrial design.Automtive paint. to provide more long-term protection.

9

葫芦电机——坚固持久的高性能电机，即使在高温和长期运行中，也具有大的安全储备。采用两级起升速度，另有变频控制，提供多速度变化。

Hoist motor——High-performance motor with large safety reserves even at high ambient temperatures and in prolonged operation. Using 2 hoist speed with 1:4 speed ratio and frequency Control to multi-speed requirements.

10

链轮——插入式连接便于快速更换整个链轮而无需拆卸电机或齿轮部件，从而大大减少了停机时间。采用高度耐磨的材料，使用寿命长。

Chain drive——The unit is a complete assembly consisting of the chain and chain guide which facilitates quick and easy replacement of the entire chain drive without having to remove the otor or gear parts. Downtime can therefore be reduced significantly.The chain drive consists of highly wear-resistant materials for long service life.

11

集链盒——采用坚固、有韧性并且耐冲击的特殊塑料；可放置长度8米的链条，也可提供可放置链条长达40米或120米的集链盒。

Chain collector box——Suspended from a pivoting connection, is made of tough,flexible and particularly impact-presistant plastic; capacity for up to 8m hook path ,A flexible chain container for chain lengths up to 40m as well as special lengths up to 120m.

12

吊钩组——吊钩装置手握舒适，符合人体工程学原理。吊钩经锻造加工，强度绝佳，吊钩360度旋转，特殊设计的安全舌片，确保操作安全。

Bottom block——Comfortable hook device by hand For improved ergonomic handling of the hook. The hook after forging processing to make great-strength,hooks rotate by 360 degrees,a specially designed safety tongue,to ensure safe operetion.

HIGHER PERFORMANCE, FASTER 更高性能、更快速度

- ▶ BM型环链电动葫芦具有高性能、高安全性可靠性的优点，采用人性化设计理念，增加生产量，使工作达到最高效率。
- ▶ BM electric chain hoist with high performance, high safety reliability advantages, Using use humanized design concept to increase your productivity and make the work to achieve the highest efficiency

灵敏快捷

Sensitive and fast

- ▶ BM型环链电动葫芦动作灵活，定位精准。主起升速度快速有效，低速起升确保载荷平稳，精确定位。
- ▶ BM electric chain hoist with flexible action, positioning accuracy. Load stood up quickly and efficiently speed, low speed hoisting load smoothly, accurate positioning.

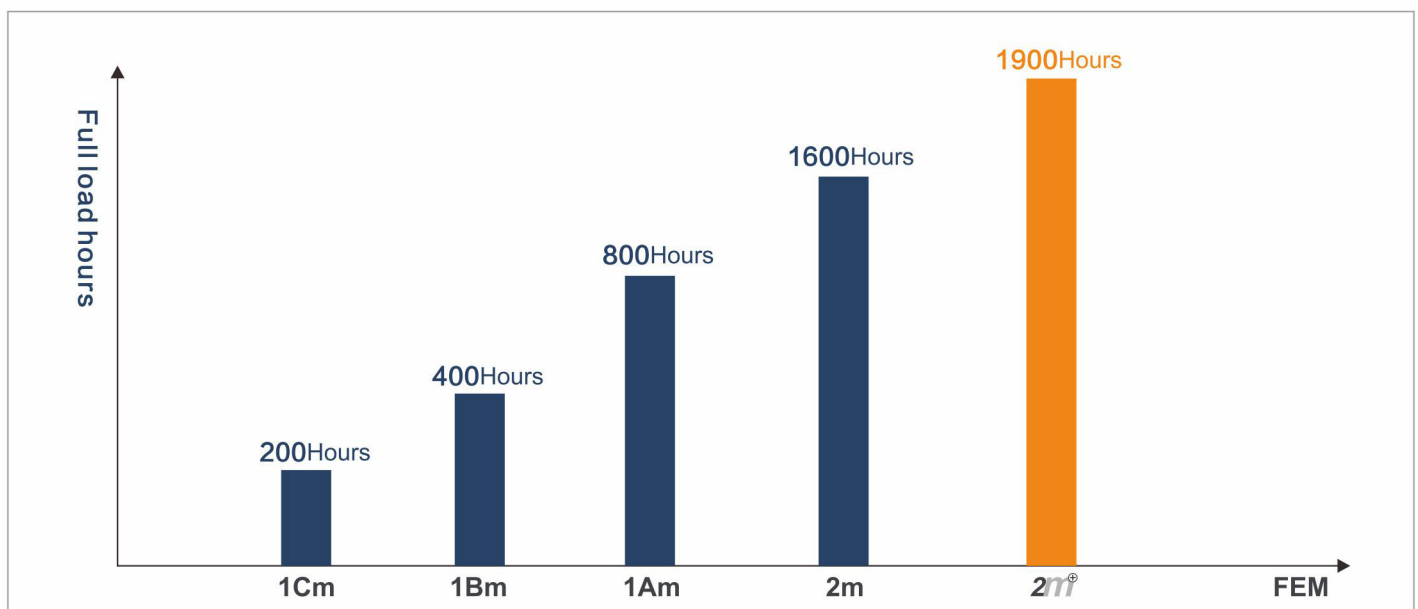
工作效率高、使用寿命更长

Longer service life for greater efficiency

- ▶ 在实际工作中，工作级别要比普通的2m工作级别多出20%，这意味着能够延长使用寿命，减少大修次数，这也是BM型环链电动葫芦所独有的特征。
- ▶ In practical terms, BM electric chain hoist service life is extended by approx. 20% in comparison with the conventional 2m classification for chain hoists FEM rating. This results in significantly prolonged time between service intervals and general overhauls. This extra operating life is only offered by BM electric chain hoist.



满载情况下的工作寿命



MAINTENANCE: FAST AND SIMPLE

► 维护：快速简单

- BM型环链电动葫芦的所有主要驱动部件如齿轮箱，制动器和离合器等均采用特殊工艺制造，坚固耐用。BM型系列制动器5年免维护。起重产品出众的质量令其即使在繁忙工作下依然有很长的工作寿命。
- BM electric chain hoist, all main drive components, such as gear box, brake and clutch made by a special process, and durable, BM series brake have 5 years free maintenance, hoist still has a long working life with high quality even in busy work.
- 由于BM型环链电动葫芦良好的服务设计，少量必要的维护工作能够迅速地简单地完成。
- Because BM electric chain hoist is designed by excellent service idea and necessary maintenance work, can quickly & simply finish works.
- BM型环链电动葫芦的链轮设计紧凑、即插即用，更换快速方便，并且无需拆卸电机或齿轮箱部件。维护工作所造成的长时间停机已经成为过去。
- The chain drive of BM electric chain hoist is designed as a compact unit which is slid into place and can be replaced in a minimum of time without the need to disassemble motor or gearbox parts. Long downtimes as a result of maintenance work are now a thing of the past.
- **专业的链轮设计**
Professional chain guide design
- **运行更平稳高效**
More smooth and efficient operation
- **链条磨损更小**
Chain wear less
- **维护更方便**
Easy maintenance

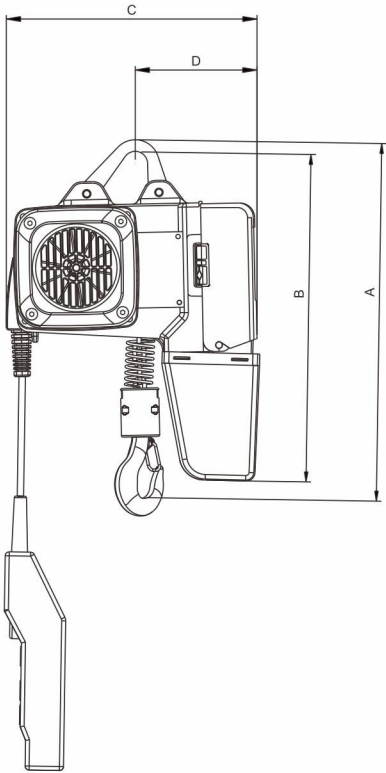
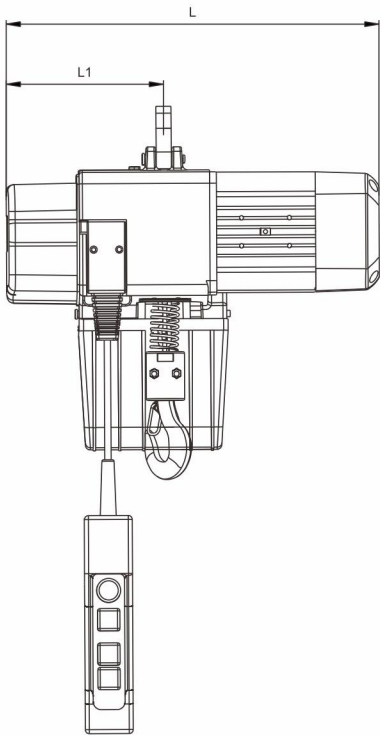


Chain Guide



ELECTRIC CHAIN HOIST

环链电动葫芦

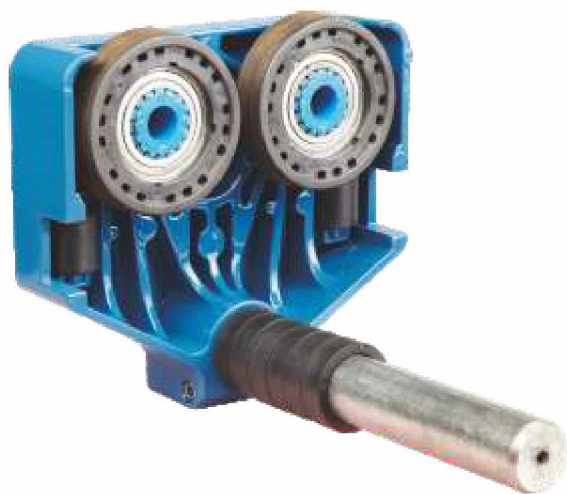
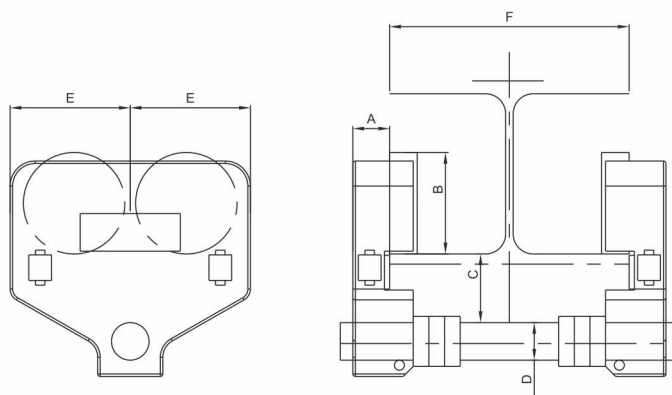


型号 Model	额定载荷 Capacity (Ton)	起升速度 Lifting speed (m/min)	转速 Rotation speed (r/min)	工作电压 Working power	控制电压 Control voltage	链条倍率 Chain fall	工作级别 Working level
BMS0.25-01M	0.25	8/2	2880/720	220V-460V	24V	1/1	M5
BMS0.5-01M	0.5	8/2	2880/720	220V-460V	24V	1/1	M5
BMS0.5-02M	0.5	4/1	2880/720	220V-460V	24V	2/1	M5
BMS01-02M	1	4/1	2880/720	220V-460V	24V	2/1	M5

型号 Model	链条倍率 Chain fall	L (mm)	L1 (mm)	A (mm)	B (mm)	C (mm)	D (mm)
BMS0.25-01M	1/1	425	156	370	420	275	148
BMS0.5-01M	1/1	467	197	400	450	315	153
BMS0.5-02M	2/1	425	156	420	420	275	148
BMS01-02M	2/1	467	197	450	450	315	153

CHAIN ELECTRIC HOIST TROLLEY

环链电动葫芦小车 ◀



- ▶ 铝合金压铸墙板
带导向轮
车轮可以在工字钢和H型钢上行走
- ▶ Aluminum alloy die-casting wallboard
with a guide wheel
The wheels can walk in I beams and H beam
- ▶ 调节圈设计
安装简单、快速，范围内无限调节轮缘宽度。
- ▶ Adjustment circle design
Installation is simple, fast, within the scope of
Wireless flange width adjustment
- ▶ 行走轮
高强度耐磨聚酰胺制造，运行平稳、无噪音，
阻力更低。
- ▶ Traveling wheel
High strength & wearable polyamide manufacturing,
smooth operation, no noise, less resistance

型号 Model	额定载荷 Capacity(Ton)	A (mm)	B (mm)	C (mm)	D (mm)	E (mm)	F (mm)
PC-250M	0.25	48	81	55	30	95	100-200
PC-500M	0.5	48	81	55	30	95	100-200